

SK-Mon-10



Intelligent Ten Input Monitor Module

The SK-Mon-10 acts as an interface to contact devices, such as waterflow switches and pull stations. The multiple input design allows for easy and efficient installation.

For more information about the IntelliKnight system, or to locate your nearest source, please call 1-800-328-0103 or in Connecticut, call (203) 484-7161.

Description

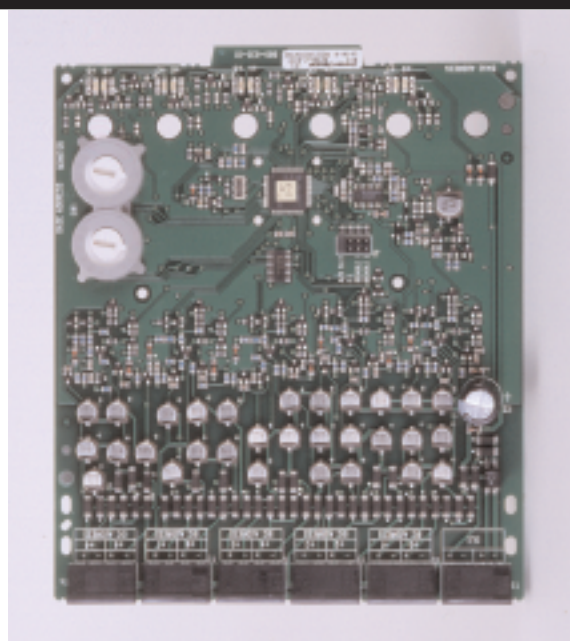
The SK-Mon-10 is a ten point addressable monitor module for use with Silent Knight IntelliKnight series fire alarm control panels (FACPs). Each monitor module is intended to interface between a control panel and a normally open contact device. A common SLC input is used for all modules, and the initiating device loops share a common supervisory supply and ground. Otherwise, each monitor operates independently from the others. Each module has its own address.

The SK-Mon-10 supports ten Class B supervised contact inputs or five Class A supervised contact inputs.

Conventional 4-wire smoke detectors can be monitored for alarm and trouble conditions.

Features

- 10 contact monitor
- Support for Class A and Class B wiring
- Fully supervised
- LED indicator for each input
- Disable unused addresses
- Mount up to two modules in one accessory cabinet (PN IDP-ACB)
- Rotary address switches for fast installation
- Removable 12 to 18 AWG plug in terminal blocks for easy wiring and troubleshooting
- Mounting hardware included
- UL Listed



SK-Mon-10

Installation

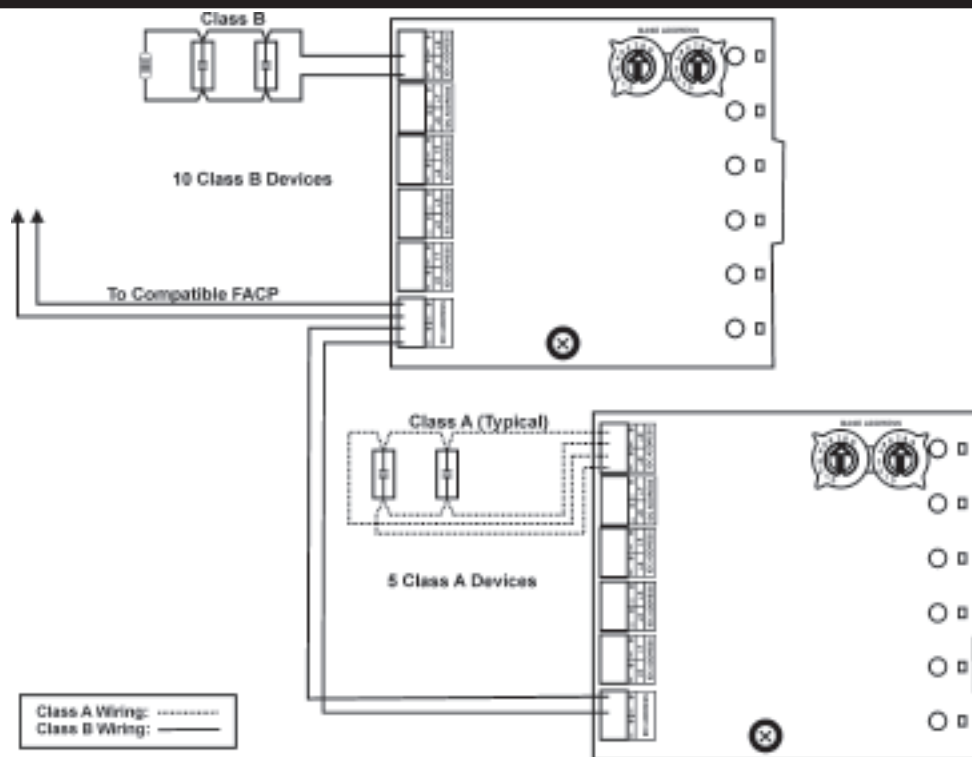
You can install one or two SK-Mon-10 modules in an accessory cabinet (PN IDP-ACB). The accessory cabinet has a built-in mounting plate that positions the module boards so that all of the status indicators are visible.

Compatibility

The SK-Mon-10 is compatible with the following IntelliKnight FACP's:

5700
5808
5820XL

Model SK-Mon-10



Wiring SK-Mon-10 Monitoring Modules

Specifications

Physical

Height: 6.8" (17.3 cm)

Width: 5.8" (14.7 cm)

Depth: 1.25" (3 cm)

Shipping Weight: 6.3 oz (196 g)

Electrical

Wire Gauge: 12-18

Operating Voltage: 15 – 32 VDC

Operating Current (All ten LEDs solid on): 55 mA

Standby Current: 3.5 mA max

Initiating Device Circuit Wiring Resistance: 1500Ω max

Initiating Device Circuit Voltage: 10.2 VDC max

Initiating Device Circuit Current: 240 µA max

Environmental

Operating Temperature: 32°F – 120°F (0°C – 49°C)

Humidity: 10% – 93% non-condensing

Ordering Information

IDP-Mon-10 10 Input Monitoring Module

Accessories

IDP-ACB IDP Module Cabinet



This document is not intended to be used for installation purposes. We try to keep our product information up-to-date and accurate. We cannot cover all specific applications or anticipate all requirements. All specifications are subject to change without notice. For more information, contact Silent Knight 12 Clintonville Road, Northford, CT 06472-1610 Phone: (800) 328-0103, Fax: (203)484-7118. www.silentknight.com

MADE IN AMERICA

FORM# 350132 Rev A
© 2009 Honeywell International Inc.